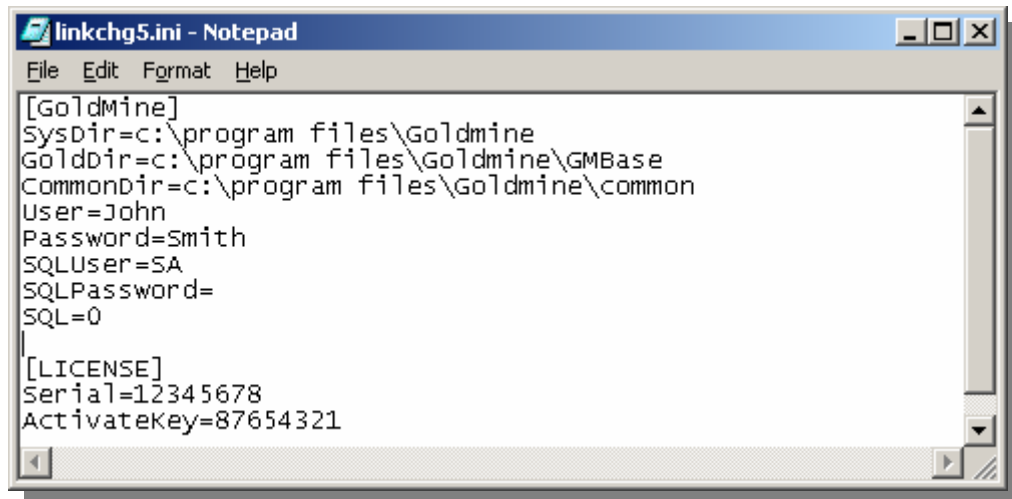


How to configure Linked Documents Manager

It is necessary for Linked Documents Manager to be configured with the appropriate information regarding the location of various GoldMine® system files.

To achieve this, proceed as follows -

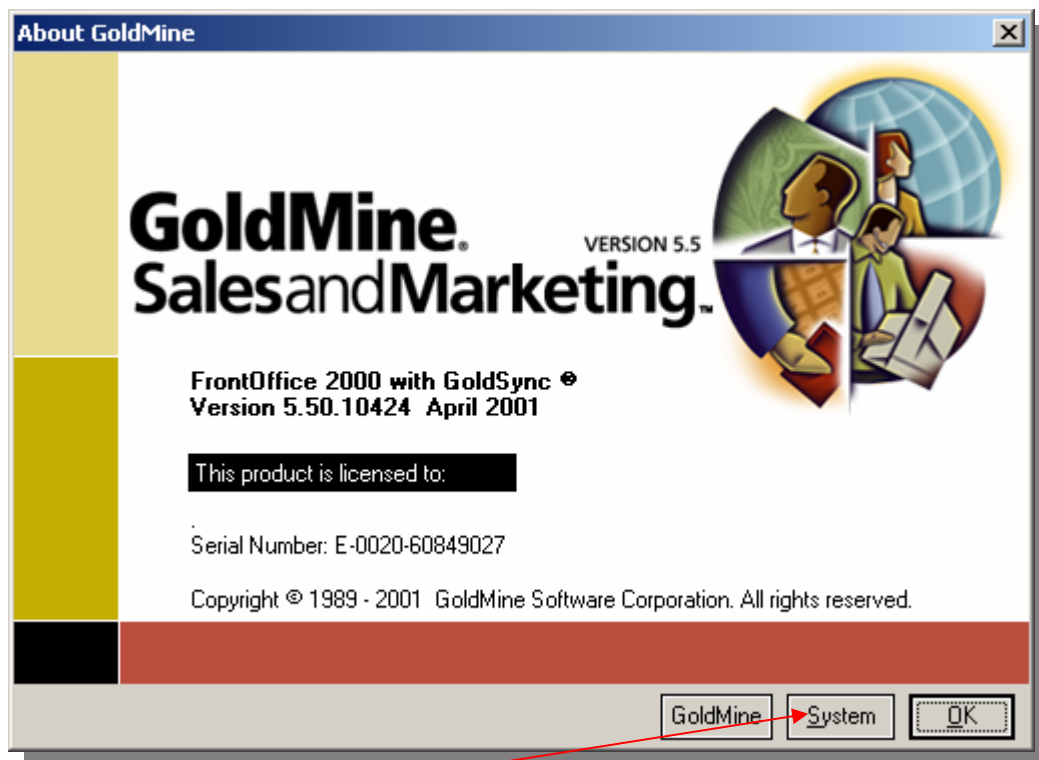
Start Windows Notepad® and open the file named Linkchg5.ini as shown below:



```
linkchg5.ini - Notepad
File Edit Format Help
[Goldmine]
SysDir=c:\program files\Goldmine
GoldDir=c:\program files\Goldmine\GMBase
CommonDir=c:\program files\Goldmine\common
User=John
Password=Smith
SQLUser=SA
SQLPassword=
SQL=0

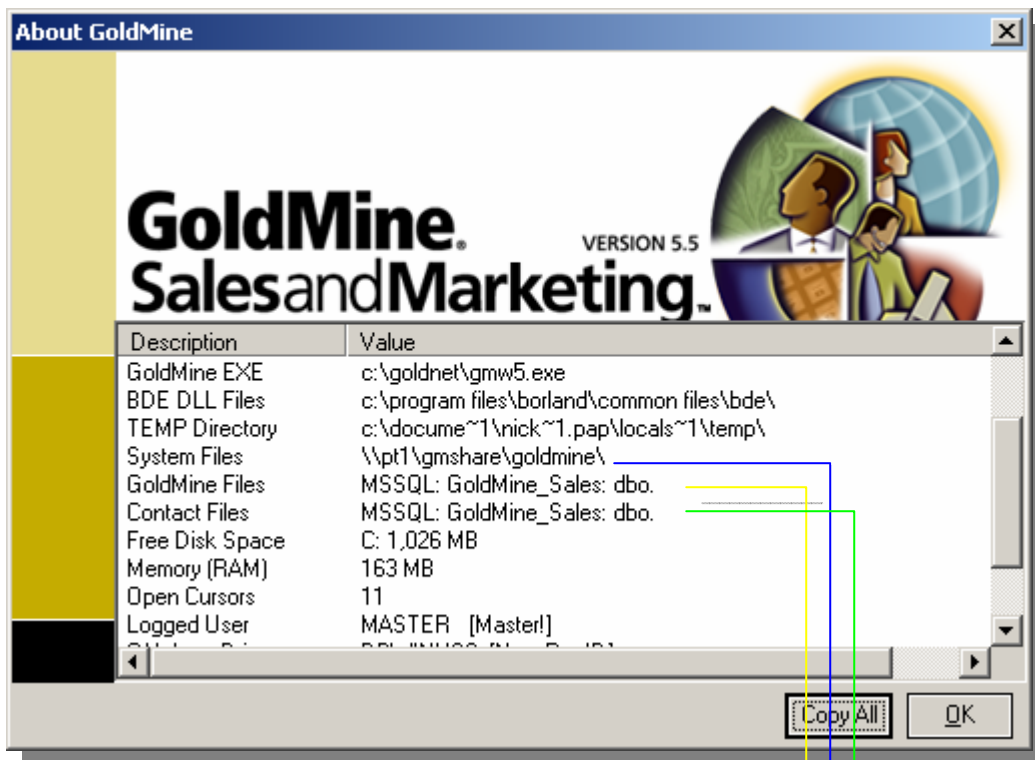
[LICENSE]
Serial=12345678
ActivateKey=87654321
```

From the menu bar of GoldMine® select **Help** | **About** to summon this window:

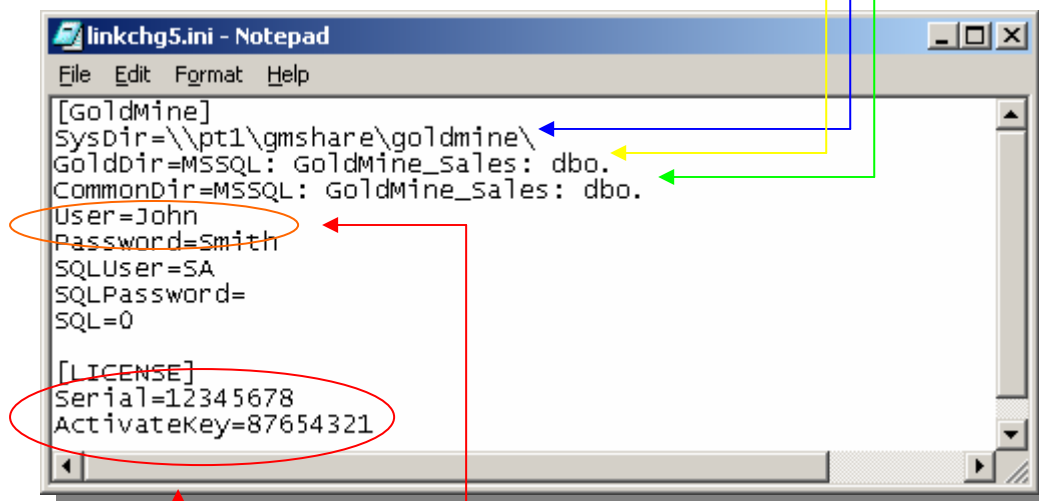


Click on the **System** button.

This will summon the following window:



Copy the precise paths shown in the GoldMine® system window to the respective points in the Linkchg5.ini file as shown in the example below:



Ensure that the correct GoldMine® **Username** and **Password** (which must have Master Rights) are also entered in the file.

The **Serial Number** and **Activation Key** are obtainable from Papillon Technology. (If you are using SQL Server enter the correct SQL username and password and alter the entry SQL=0 to SQL=1). Save the file and close Notepad®.

(Please note - the activation key will only function with the licensed copy of GoldMine® for which it was purchased.) To contact support via e-mail: support@papillontechnology.com

To contact us by telephone: +44 (0)1992 560487 or by fax on +44 (0)1992 560489

To contact us by telephone from the US: +1 (614) 559-2270