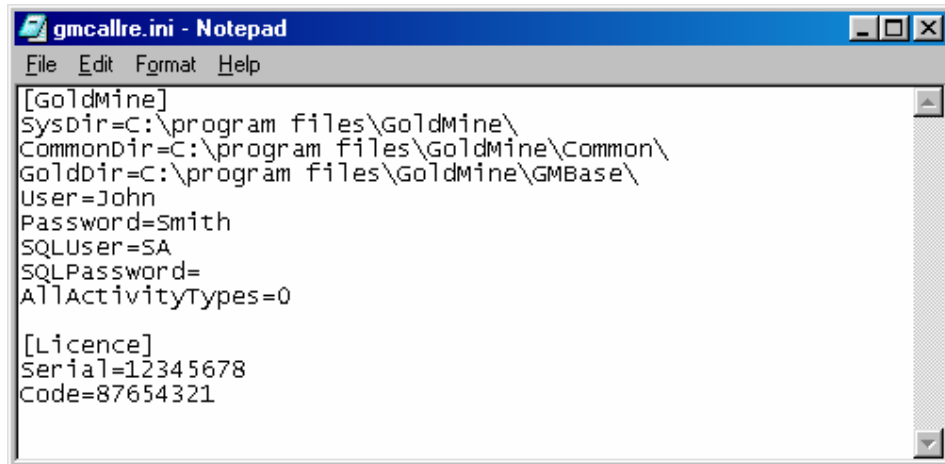


## How to configure Call Reallocator

It is necessary for Call Reallocator to be configured with the appropriate information regarding the location of various GoldMine® system files.

To achieve this, proceed as follows -

Start Windows Notepad® and open the file named gmcallre.ini as shown below:



```
gmcallre.ini - Notepad
File Edit Format Help
[GoldMine]
SysDir=C:\program files\GoldMine\
CommonDir=C:\program files\GoldMine\Common\
GoldDir=C:\program files\GoldMine\GMBase\
User=John
Password=Smith
SQLUser=SA
SQLPassword=
AllActivityTypes=0

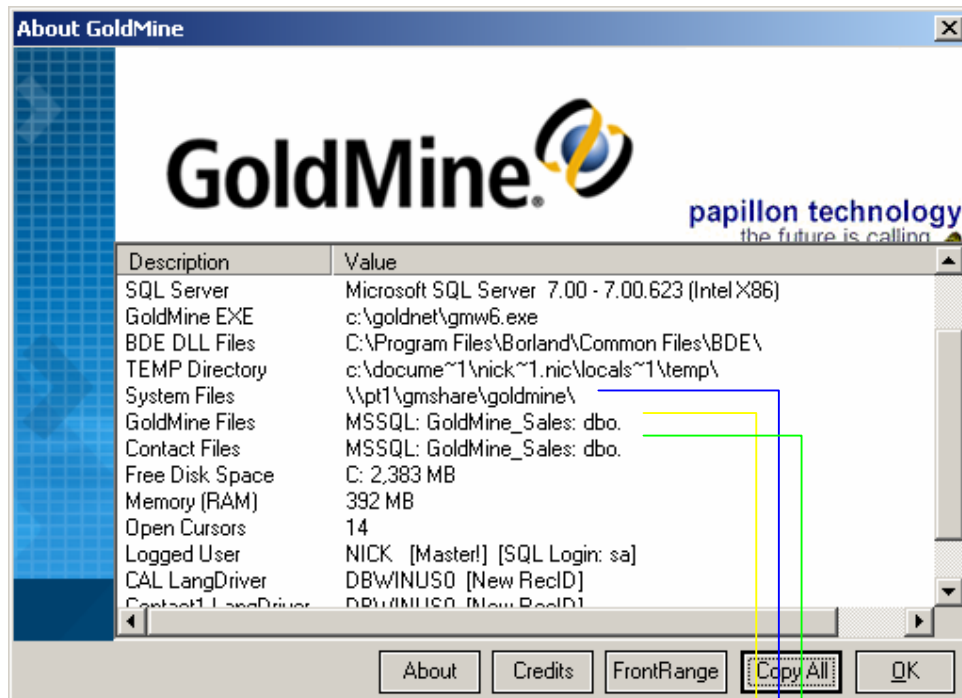
[Licence]
Serial=12345678
Code=87654321
```

From the menu bar of GoldMine® select **Help | About** to summon this window:

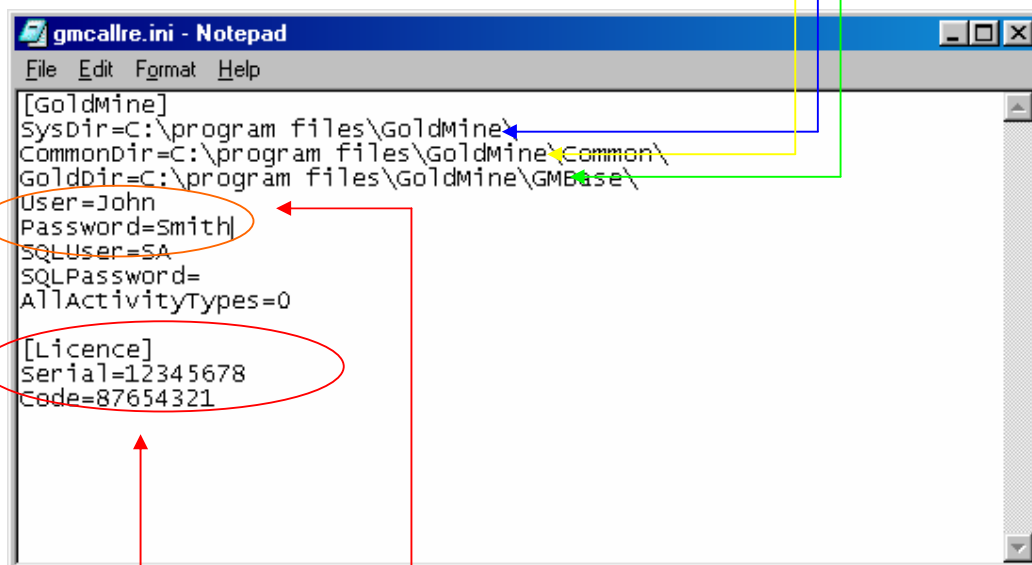


Click on the **System** button.

This will summon the following window:



Copy the precise paths shown in the GoldMine® system window to the respective points in the gmcalle.ini file as shown in the example below:



Ensure that the correct GoldMine® **Username** and **Password** (which must have Master Rights) are also entered in the file. The **Serial Number** and **Activation Key** are obtainable from Papillon Technology. (If you are using SQL Server enter the correct SQL username and password and alter the entry SQL=0 to SQL=1). Save the file and close Notepad®.

(Please note - the activation key will only function with the licensed copy of GoldMine® for which it was purchased.)

To contact support via e-mail [support@papillontechnology.com](mailto:support@papillontechnology.com)

To contact us by telephone +44 (0)1992 560487 or by Fax +44 (0)1992 560489